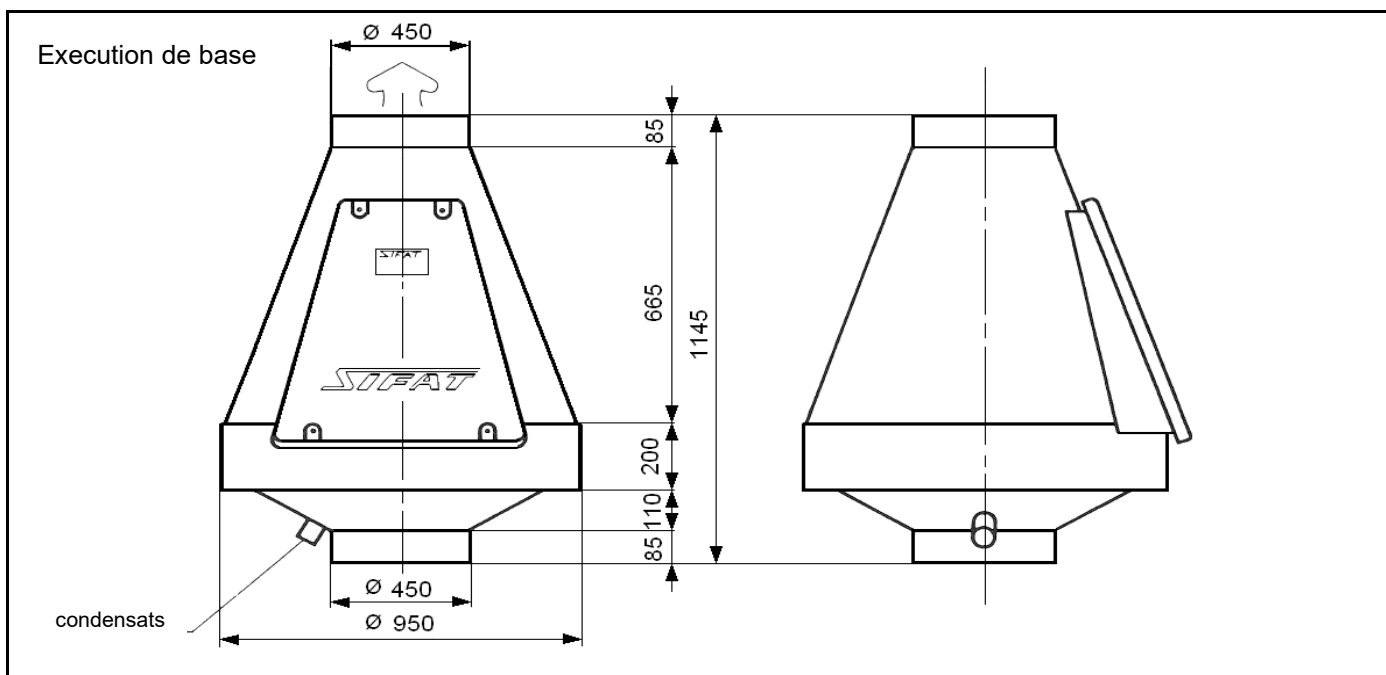


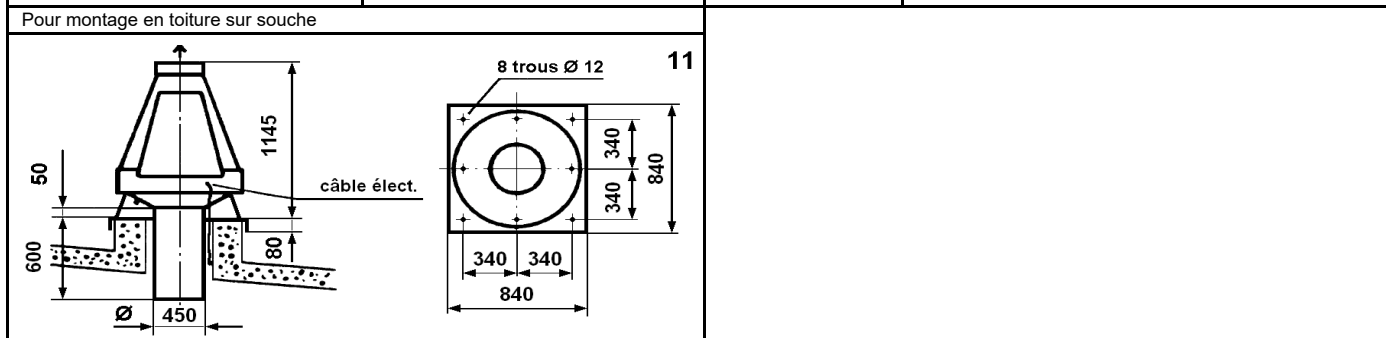
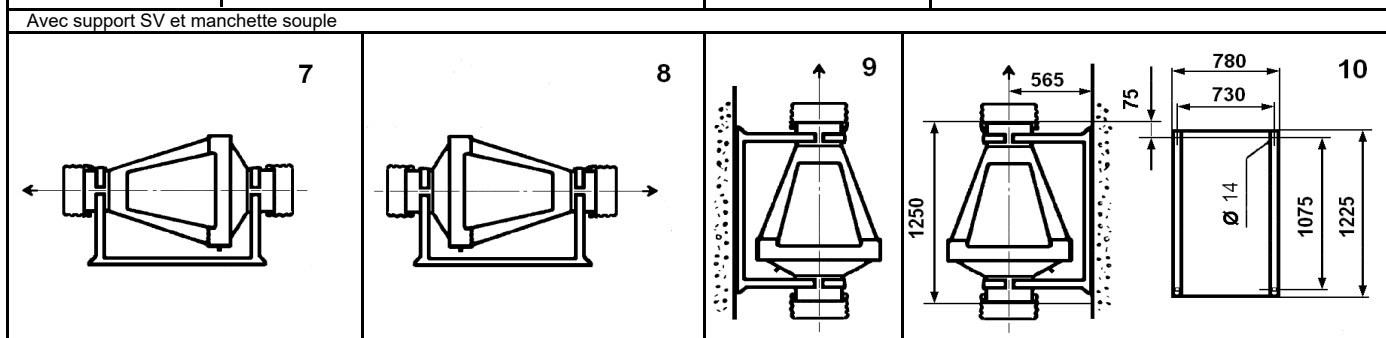
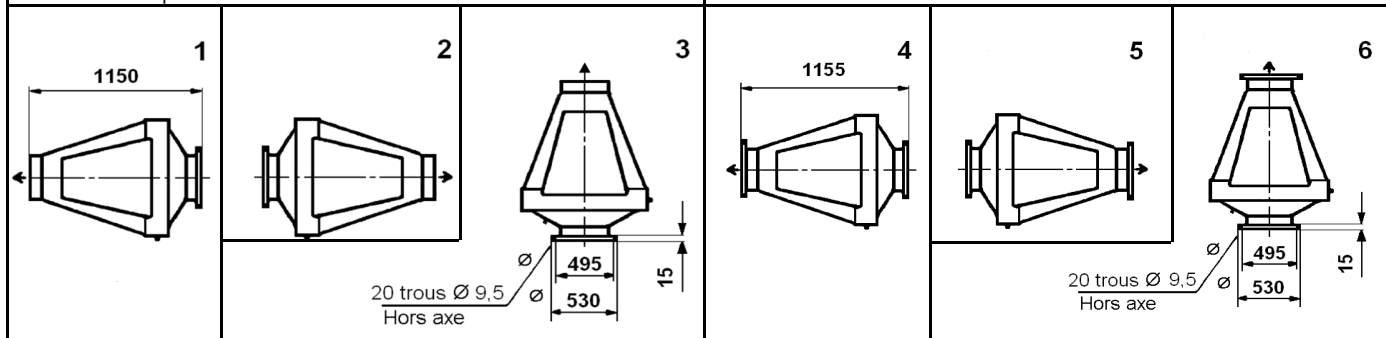
Encombrement du ventilateur axial

VTA 450C

Brevet n° 2.337.270



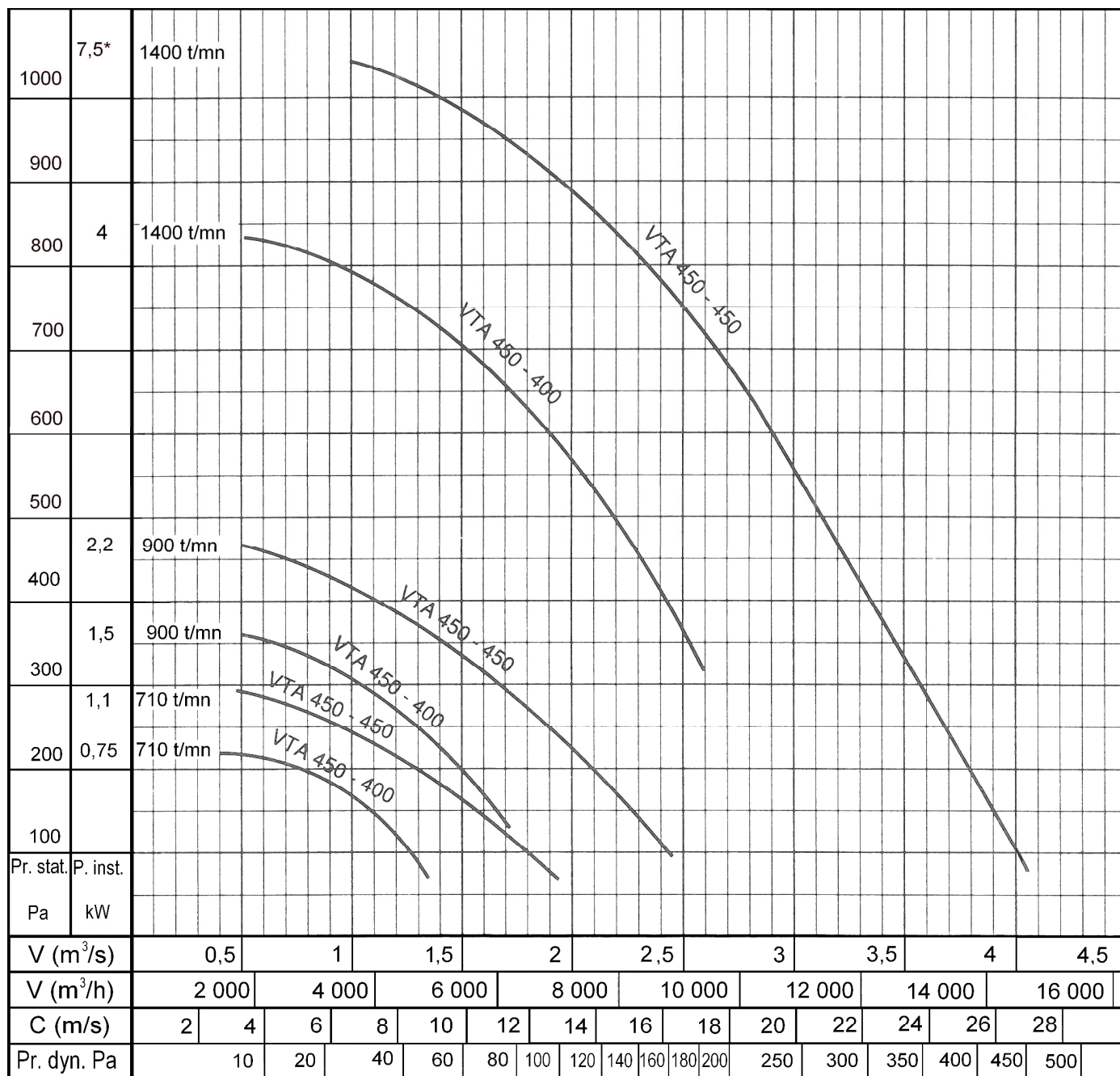
Arrangements



Caractéristiques du ventilateur axial

VTA 450C

Brevet n° 2.337.270



*) Démarrage étoile triangle préciser la tension d'alimentation

Type	n(T/min.)	dB (A)	Bande d'octave des fréquences moyennes en HZ: dB 10 ⁻¹² W							
			63	125	250	500	1000	2000	4000	8000
VTA 450 - 400	710	61	61	56	57	60	57	51	46	35
	900	65	62	57	61	62	61	55	50	41
	1400	73	70	70	70	70	69	64	58	49
VTA 450 - 450	710	65	66	59	60	64	60	52	47	36
	900	68	71	63	64	66	64	57	51	42
	1400	77	74	72	75	76	74	68	61	53