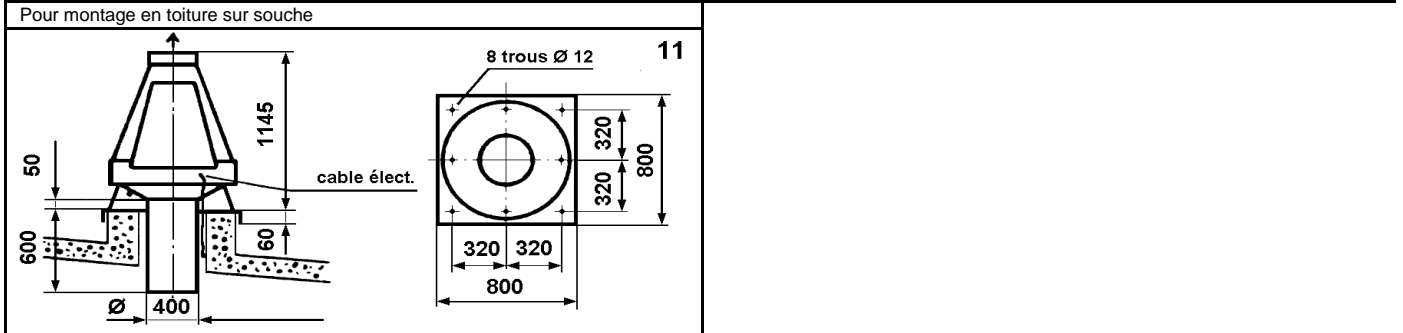
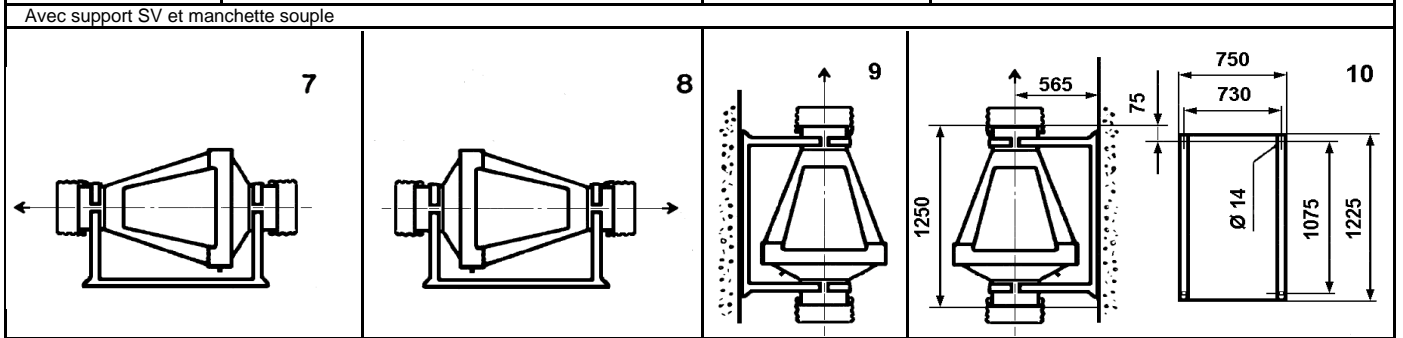
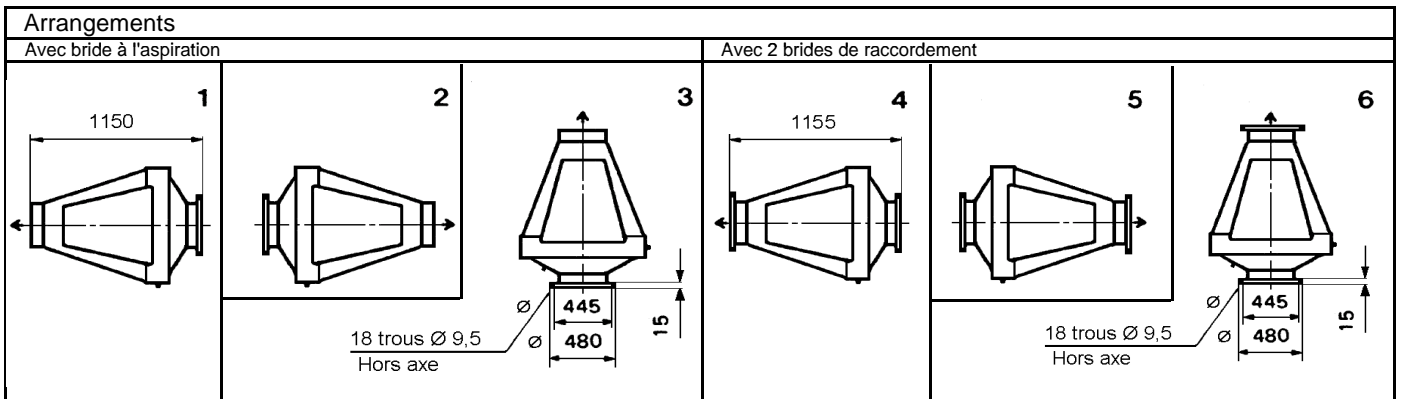
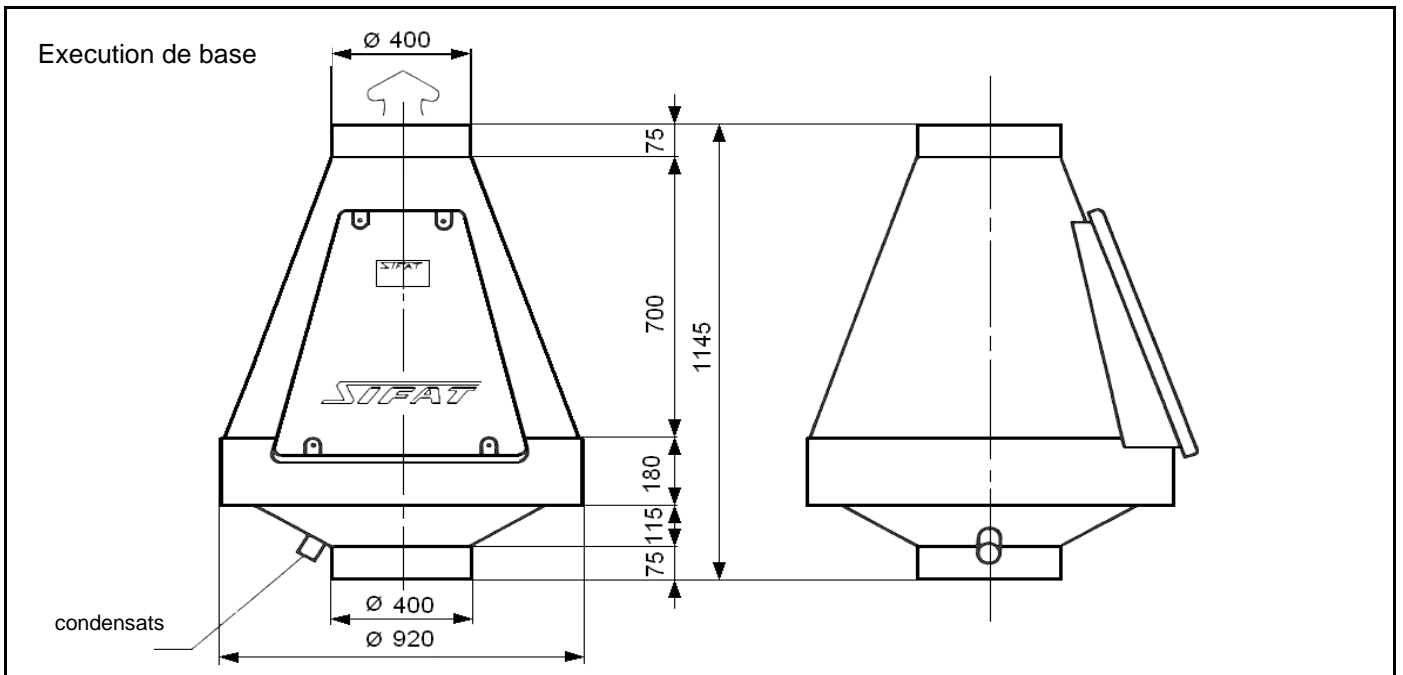


# Encombrement du ventilateur axial

## VTA 400C

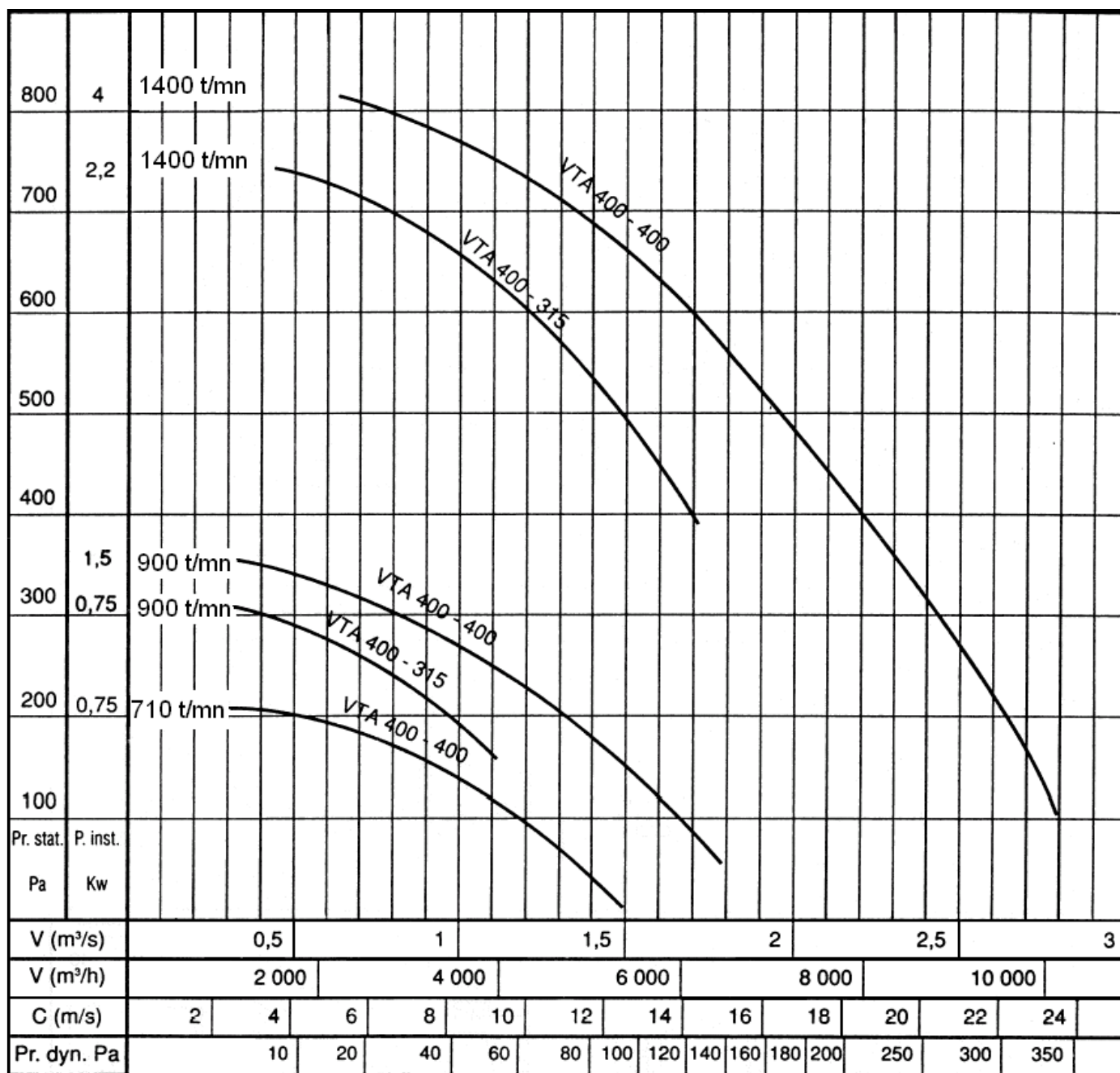
Brevet n°2.337.270



# Caractéristiques du ventilateur axial

# VTA 400C

Brevet n°2.337.270



Type	n (T/min.)	dB (A)	Bande d'octave des fréquences moyennes en HZ: dB 10 <sup>-12</sup> W							
			63	125	250	500	1000	2000	4000	8000
VTA 400 - 315	900	56	73	74	70	68	65	59	52	40
	1400	68	85	83	81	78	77	71	65	54
VTA 400 - 400	710	61	61	56	57	60	57	51	46	35
	900	65	62	57	61	62	61	55	50	41
	1400	73	70	70	70	70	69	64	58	49